

**Anti-TYRO3 Reference Antibody (ELB031)**  
**Recombinant Antibody**  
**Catalog # APR10583****Specification**

---

**Anti-TYRO3 Reference Antibody (ELB031) - Product Information**

Application	FC, Kinetics, Animal Model
Primary Accession	<a href="#">Q06418</a>
Reactivity	Human, Mouse
Clonality	Monoclonal
Isotype	IgG1
Calculated MW	143.64 KDa

**Anti-TYRO3 Reference Antibody (ELB031) - Additional Information****Target/Specificity**  
TYRO3**Endotoxin**  
< 0.001EU/ µg,determined by LAL method.**Conjugation**  
Unconjugated**Expression system**  
CHO Cell**Format**  
Purified monoclonal antibody supplied in PBS, pH6.0, without preservative.This antibody is purified through a protein A column.**Anti-TYRO3 Reference Antibody (ELB031) - Protein Information****Name** TYRO3**Synonyms** BYK, DTK, RSE, SKY, TIF**Function**  
Receptor tyrosine kinase that transduces signals from the extracellular matrix into the cytoplasm by binding to several ligands including TULP1 or GAS6. Regulates many physiological processes including cell survival, migration and differentiation. Ligand binding at the cell surface induces dimerization and autophosphorylation of TYRO3 on its intracellular domain that provides docking sites for downstream signaling molecules. Following activation by ligand, interacts with PIK3R1 and thereby enhances PI3-kinase activity. Activates the AKT survival pathway, including nuclear translocation of NF-kappa-B and up-regulation of transcription of NF-kappa-B-regulated genes. TYRO3 signaling plays a role in various processes such as neuron protection from excitotoxic injury, platelet aggregation and cytoskeleton reorganization. Also plays an important role in inhibition of Toll-like receptors (TLRs)-mediated innate immune response by activating STAT1,

which selectively induces production of suppressors of cytokine signaling SOCS1 and SOCS3.

**Cellular Location**

Cell membrane; Single-pass type I membrane protein

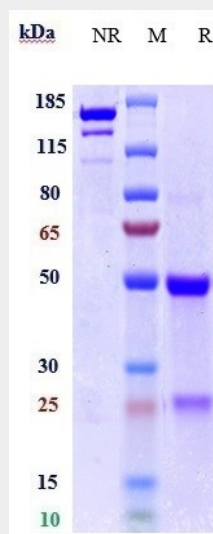
**Tissue Location**

Abundant in the brain and lower levels in other tissues

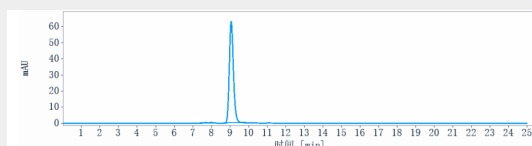
**Anti-TYRO3 Reference Antibody (ELB031) - Protocols**

Provided below are standard protocols that you may find useful for product applications.

- [Western Blot](#)
- [Blocking Peptides](#)
- [Dot Blot](#)
- [Immunohistochemistry](#)
- [Immunofluorescence](#)
- [Immunoprecipitation](#)
- [Flow Cytometry](#)
- [Cell Culture](#)

**Anti-TYRO3 Reference Antibody (ELB031) - Images**

Anti-TYRO3 Reference Antibody (ELB031) on SDS-PAGE under reducing (R) condition. The gel was stained with Coomassie Blue. The purity of the protein is greater than 90%



The purity of Anti-TYRO3 Reference Antibody (ELB031) is more than 95% ,determined by SEC-HPLC.